

HANDBOOK



VOLUME 1

SIGNSQUADS

DESIGN • PRINT • INSTALL

www.SignSquads.com | 1-201-729-1720

PPE PRODUCTS



02 | SANITIZING STATIONS & STANDS



08 | SNEEZE GUARDS, PROTECTION WALLS & BARRIERS



18 | FACE MASKS STOCK PATTERNS & CUSTOM PRINTED



22 | SOCIAL DISTANCING CHAIR COVERS, FLOOR DECALS

SYMBOL & WARRANTY KEY



lifetime limited warranty (hardware)



5 year limited warranty (hardware)



1 year limited warranty (hardware)



90 day limited warranty (hardware)

PPE PRODUCTS

OUTDOOR CURBSIDE SIGNS, FLAGS & BANNERS | 26



OUTDOOR HANGING BANNERS | 32



OUTDOOR TENTS | 34



INTERIOR SIGNS, BANNERS, SIGN STANDS | 38



SYMBOL & WARRANTY KEY



graphics limited
1 year warranty
(indoor products)



graphics limited
6 month warranty
(outdoor & table
throw products)



graphics limited
1 day warranty
(plex products)



product made in
North America

SANITIZING STATIONS & STANDS



SANITIZING STATIONS & STANDS

BANNITIZER™ SANITIZING STATION

- variable graphic height = 60" - 83"
- 1000ml battery operated **hands-free** sanitizer dispenser with lock included
- requires four C batteries
- takes sanitizing liquid or gel
- accessory channel holds upright and sanitizer dispenser
- hybrid bungee/telescoping pole with toolless quick rail
- adjustable feet on base
- anodized silver base only
- quick slide graphic to leader attachment
- graphic tensioner
- includes carry bag with strap

	ITEM #	DESCRIPTION	PRICE
31.5" WIDE	HS1-BCD-800-KIT	Bannitizer Sanitizing Station, Single-Sided Graphic Kit	\$465.60
	HS1-BCD-800	Hardware only	\$379.20

*kits include hardware, graphic & carry bag



hands-free sanitizing station!
PERFECT FOR ENTRYWAYS

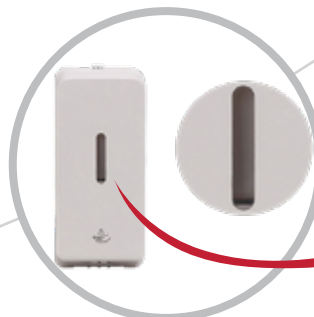


side view

dispenser with lock



1000ml capacity



visual window



SANTIZING STATIONS & STANDS



TRAPPA™ TUBE SANITIZER STAND

- 1000ml battery operated, **hands-free** sanitizer dispenser with lock included
- requires four C batteries
- takes sanitizing liquid or gel
- 11"x17" silver Trappa poster frame with clear, protective lens
- front loading graphic mechanism makes graphic changes easy
- capability to display in portrait or landscape configuration
- aluminum snap-button tube and plastic base
- assembled dimensions = 12"w x 64.75"h x 12"d
- sanitizer solution sold separately

ITEM #	DESCRIPTION	1-10	11+
TRAPPA-TUBE-SANI-TRP2-11-S	Trappa Tube Sanitizer Stand Hardware	\$319.92	\$287.92
TRP2-11-G	Trappa Tube Sanitizer Stand Graphic	\$21.60	\$20.40

hands-free sanitizing dispenser included!



TRAPPA STEEL SANITIZER STAND

- 1000ml battery operated sanitizer dispenser with lock, uses gel or liquid
- four C batteries required
- 11"w x 8.5"h black Trappa poster frame can be positioned portrait or landscape
- Trappa frame comes with clear, protective lens
- front loading graphic mechanism makes graphic changes easy
- sturdy steel post and steel base
- assembled dimensions = 12"w x 64"h x 12"d
- sanitizer solution sold separately

ITEM #	DESCRIPTION	1-10	11+
TRAPPA-STEEL-SANI-STAND	Trappa Steel Sanitizer Stand Hardware	\$344.00	\$312.00



TRAPPA POST SANITIZER STAND

- 1000ml battery operated, **hands-free** sanitizer dispenser with lock included
- requires four C batteries
- takes sanitizing liquid or gel
- 16"x20" silver Trappa poster frame with clear, protective lens
- front loading graphic mechanism makes graphic changes easy
- sturdy aluminum post and heavy domed steel base
- assembled dimensions = 20"w x 74"h x 18"d
- sanitizer solution sold separately

ITEM #	DESCRIPTION	1-10	11+
TRAPPA-POST-SANI-TRP2-4-S	Trappa Post Sanitizer Stand Hardware	\$538.08	\$480.93
TRP2-4-G	Trappa Post Sanitizer Stand Graphic	\$36.00	\$34.00



SANITIZING STATIONS & STANDS



CIRCLE TRAPPA™ POST SANITIZER STAND

- 1000ml battery operated, **hands-free** sanitizer dispenser with lock included
- requires four C batteries
- takes sanitizing liquid or gel
- sturdy 1200mm/4ft tall aluminum post and heavy domed steel base plate ensure stability
- assembled dimensions = 20"w x 60"h x 18"d
- sanitizer solution sold separately

ITEM #	DESCRIPTION	1-10	11+
TRAPPA-POST-SANI-1200-K-C	Circle Trappa Post Sanitizer Stand Kit	\$497.60	\$444.80
TRAPPA-POST-SANI	Hardware only	\$472.00	\$420.80

perfect way to welcome patrons!

DAYCARE FACILITIES, PLACES OF WORSHIP, SCHOOLS, RETAIL STORES & MORE



OVAL TRAPPA™ POST SANITIZER STAND

- 1000ml battery operated, **hands-free** sanitizer dispenser with lock included
- requires four C batteries
- takes sanitizing liquid or gel
- sturdy 1200mm/4ft tall aluminum post and heavy domed steel base plate ensure stability
- assembled dimensions = 18"w x 60"h x 18"d
- sanitizer solution sold separately

ITEM #	DESCRIPTION	1-10	11+
TRAPPA-POST-SANI-1200-K-O	Oval Trappa Post Sanitizer Stand Kit	\$510.40	\$456.80
TRAPPA-POST-SANI	Hardware only	\$472.00	\$420.80



RECTANGLE TRAPPA™ POST SANITIZER STAND

- 1000ml battery operated, **hands-free** sanitizer dispenser with lock included
- requires four C batteries
- takes sanitizing liquid or gel
- sturdy 1200mm/4ft tall aluminum post and heavy domed steel base plate ensure stability
- assembled dimensions = 18"w x 60"h x 18"d
- sanitizer solution sold separately

ITEM #	DESCRIPTION	1-10	11+
TRAPPA-POST-SANI-1200-K-R	Rectangle Trappa Post Sanitizer Stand Kit	\$523.20	\$468.80
TRAPPA-POST-SANI	Hardware only	\$472.00	\$420.80

heavy-domed steel base ensures stability

SANTIZING STATIONS & STANDS



TRAPPA™ POST SANI

- 1000ml battery operated, **hands-free** sanitizer dispenser with lock included
- requires four C batteries
- takes sanitizing liquid or gel
- 1200mm/4ft tall aluminum post and heavy domed steel base plate ensure stability
- assembled dimensions = 20"w x 49.25"h x 18"d
- sanitizer solution sold separately

ITEM #	DESCRIPTION	1-10	11+
TRAPPA-POST-SANI-1200-HW	1200mm/4'h Sanitizing Stand with Dispenser	\$472.00	\$420.80

heavy-domed steel base ensures stability



DESKTOP SANITIZING DISPENSER

- stand-alone **hands-free**, refillable desktop sanitizer dispenser
- features a white, sturdy, steel base that the dispenser attaches to at the back
- requires four C batteries
- takes sanitizing liquid or gel
- assembled unit dimensions = 8"w x 20"h x 8"d

ITEM #	DESCRIPTION	1-10	11+
HSI-DESKTOP-STND-WHT-KIT	Desktop Sanitizing Station	\$200.00	\$184.00

perfect for reception desks & counters





SANITIZING STATIONS & STANDS



POPUP SANI-CART MINI

- 23.94"w x 60"h x 20"d
- small, portable sanitizing station, perfect for use in any environment
- pre-assembled aluminum frame, pops up to assemble
- zipper-enclosed storage space holds garbage can and supplied needed*
- pullover fabric graphic identifies the station
- locking wheel casters
- can be used as a pull cart
- kit includes cart, graphic, one shelf and carry bag

ITEM #	DESCRIPTION	1-10	11+
POPUP-SANI-CART-MINI	Small Popup Sanitizing Cart	\$350.40	\$315.20
PBFM902-B-G	Cart Graphics	\$116.80	\$115.20
PBFM-R-H-SANI-G	Header Graphic	\$35.20	\$33.60

(C)



POPUP SANI-CART LARGE

- 40.13"w x 60"h x 20.06"d
- large portable sanitizing station, perfect for use in any environment
- pre-assembled aluminum frame, pops up to assemble
- zipper-enclosed storage space holds garbage can and supplied needed*
- pullover fabric graphic identifies the station
- locking wheel casters
- can be used as a pull cart
- kit includes cart, graphic, one shelf and carry bag

ITEM #	DESCRIPTION	1-10	11+
POPUP-SANI-CART-LARGE	Large Popup Sanitizing Cart	\$433.60	\$392.00
PBFL301-B-G	Cart Graphics	\$145.60	\$144.00
PBFL-R-H-SANI-G	Header Graphic	\$48.00	\$46.40

plenty of storage space for supplies!



back view



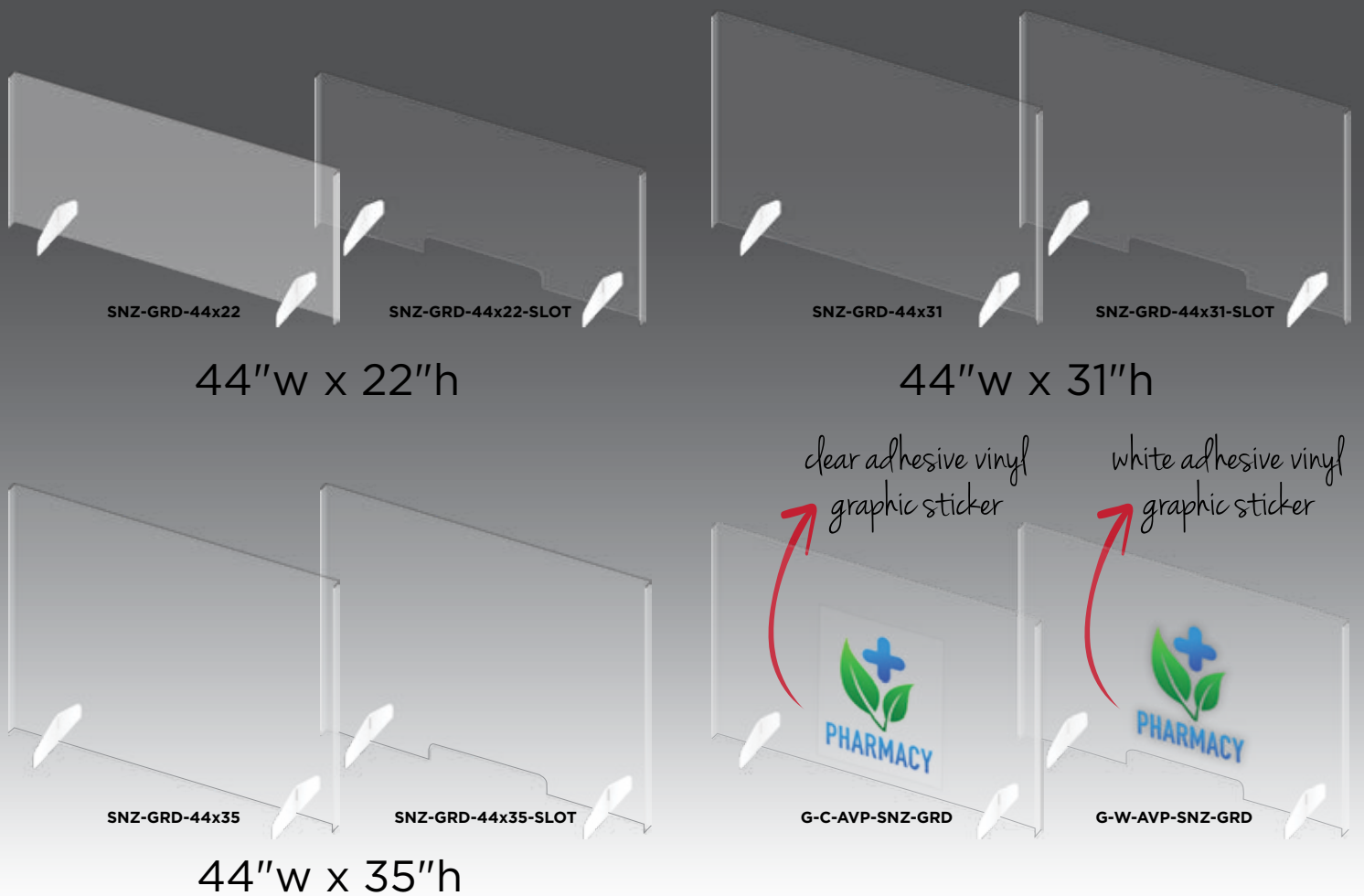
*supplies and accessories not included.

SNEEZE GUARDS, PROTECTION WALLS & BARRIERS





ACRYLIC SNEEZE GUARDS



CLEAR ACRYLIC SNEEZE GUARDS FOR TABLETOPS

- 1/8" thick
- 44" wide
- choice of 22", 31" or 35" heights
- bank slots offered for all sizes
- white sintra feet
- made in North America
- custom shapes also available within 44"w x 35"h size

ITEM #	DESCRIPTION	PRICE
SNZ-GRD-44x22	Sneeze Guard 44"w x 22"h	\$136.00
SNZ-GRD-44x22-SLOT	Sneeze Guard 44"w x 22"h, with Slot	\$136.00
SNZ-GRD-44x31	Sneeze Guard 44"w x 31"h	\$184.00
SNZ-GRD-44x31-SLOT	Sneeze Guard 44"w x 31"h, with Slot	\$184.00
SNZ-GRD-44x35	Sneeze Guard 44"w x 35"h	\$216.00
SNZ-GRD-44x35-SLOT	Sneeze Guard 44"w x 35"h, with Slot	\$216.00
G-C-AVP-SNZ-GRD	Applied 1st Surface Graphics	\$16 sq. ft.
G-W-AVP-SNZ-GRD	Cut & Weeded Applied 1st Surface Graphics	\$24 sq. ft.

vinyl graphics available!
CUSTOMER TO SPECIFY
SIZE & PLACEMENT



WARNING: Cancer
www.P65Warnings.ca.gov

PHOENIX MINI BANNER SHIELDS



PHOENIX MINI TABLETOP
17"W

PHOENIX MINI FULL HEIGHT
17"W

*retractable
protective screens!*

PORTABLE & EASY TO MOVE

PHOENIX MINI BANNER SHIELDS

- 7mm thick, clear, rollable polyester
- offered blank or printed single-sided
- easy to wipe clean and disinfect
- 400mm wide
- Phoenix Mini Tabletop Banner comes with two height options: 15.75" (1 pole) or 31.5" (2 pole)
- Phoenix Mini Full Height version comes with two height options: 47.25" (3 pole) or 63" (4 pole)
- snap top graphic rail
- silver base with black endcaps
- includes carry bag
- quick and easy to assemble

17" WIDE	ITEM #	DESCRIPTION	1-10	11+
	BS-PHX-400-1P-CP	Phoenix Mini Tabletop, Blank Shield Kit	\$40.91	\$38.34
	BS-PHX-400-G-1P-CP	Phoenix Mini Tabletop, Printed Shield Kit	\$42.51	\$39.94
17" WIDE	BS-PHX-400-4P-CP	Phoenix Mini Full Height, Blank Shield Kit	\$71.50	\$66.72
	BS-PHX-400-G-4P-CP	Phoenix Mini Full Height, Printed Shield Kit	\$82.70	\$79.52

*kits include hardware, graphic & carry bag

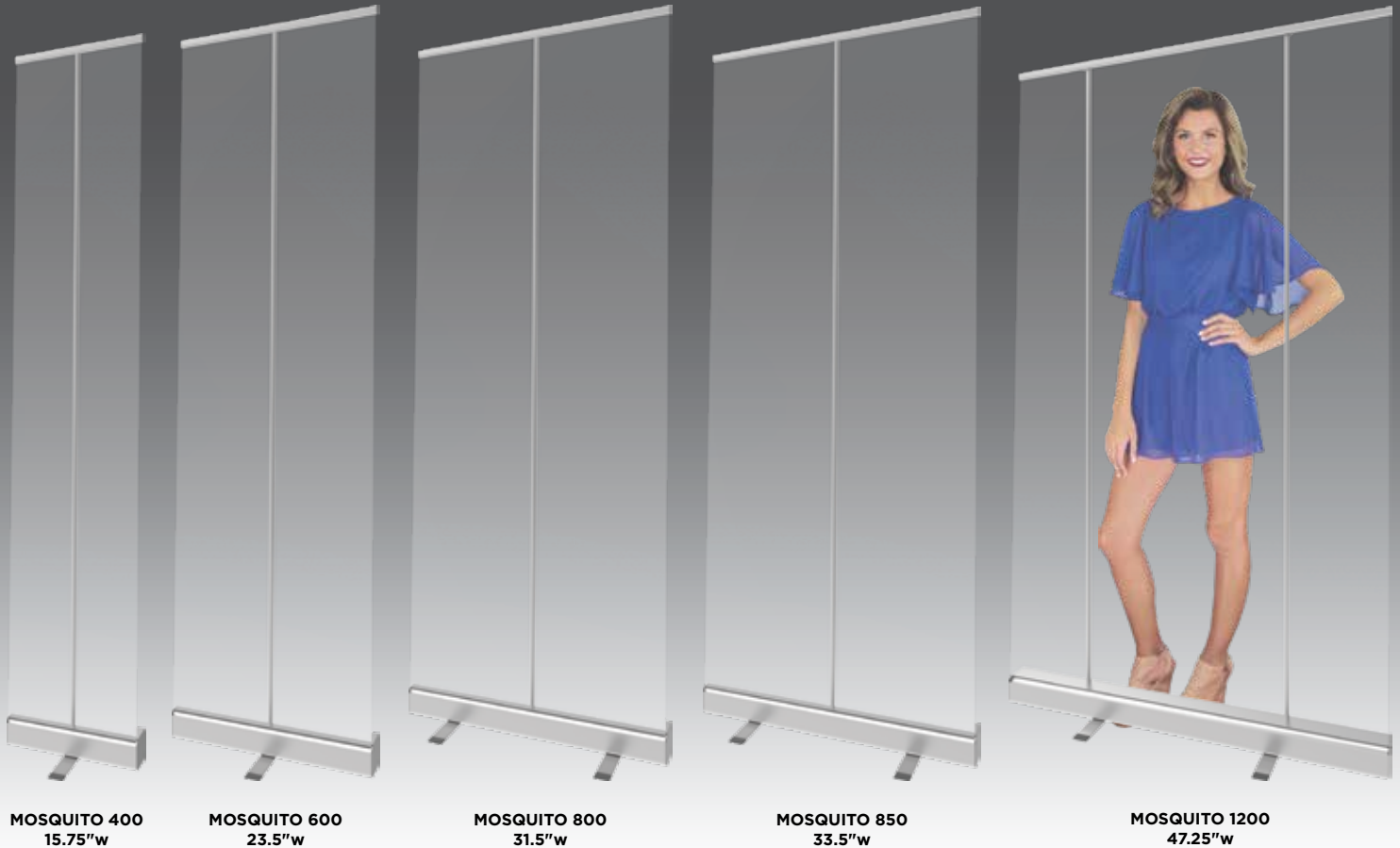
*ideal for reception desks,
classrooms, teacher's desks & more*



WARNING: Cancer
www.P65Warnings.ca.gov



MOSQUITO BANNER SHIELDS



MOSQUITO BANNER SHIELDS

- 7mm thick, clear, rollable polyester
- offered blank or printed single-sided
- easy to wipe clean and disinfect
- 3-piece bungee pole(s)
- snap top graphic rail
- silver base with black end caps & swivel feet
- includes carry bag
- 600mm, 800mm, 850mm, 1200mm have standard height of 78.5"
- 400mm has standard height of 62.5"
- quick and easy to assemble

	ITEM #	DESCRIPTION	1-10	11+
15.75" WIDE	BS-MSQT-400-CP	Mosquito 400, Blank Shield Kit	\$65.71	\$61.34
	BS-MSQT-400-G-CP	Mosquito 400, Printed Shield	\$78.51	\$70.94
23.5" WIDE	BS-MSQT-600-CP	Mosquito 600, Blank Shield Kit	\$84.83	\$78.64
	BS-MSQT-600-G-CP	Mosquito 600, Printed Shield Kit	\$102.43	\$93.04
31.5" WIDE	BS-MSQT-800-CP	Mosquito 800, Blank Shield Kit	\$99.12	\$92.72
	BS-MSQT-800-G-CP	Mosquito 800, Printed Shield Kit	\$123.12	\$103.92
33.5" WIDE	BS-MSQT-850-CP	Mosquito 850, Blank Shield Kit	\$104.94	\$96.94
	BS-MSQT-850-G-CP	Mosquito 850, Printed Shield Kit	\$128.94	\$117.74
47.25" WIDE	BS-MSQT-1200-CP	Mosquito 1200, Blank Shield Kit	\$154.91	\$141.46
	BS-MSQT-1200-G-CP	Mosquito 1200, Printed Shield Kit	\$188.51	\$154.91

*kits include hardware, graphic & carry bag



WARNING: Cancer
www.P65Warnings.ca.gov

HANGING SNEEZE GUARDS



24"w x 24"h



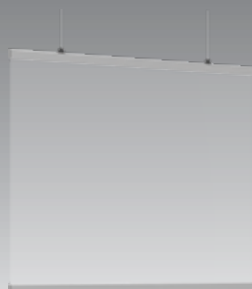
24"w x 30"h



24"w x 36"h



24"w x 48"h



30"w x 24"h



30"w x 30"h



30"w x 36"h



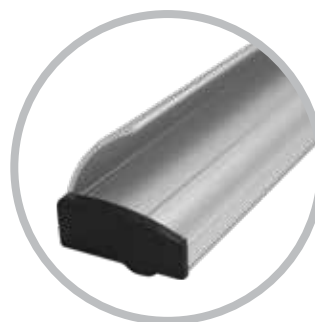
30"w x 48"h

POSTER SNAPPER HANGING SNEEZE GUARDS

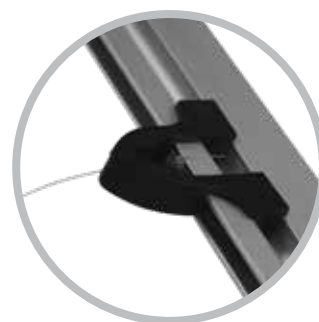
- 16 sizes available off-the-shelf
- aluminum snap frame offered in 4 widths & heights: 24", 30", 36" and 48"
- custom kits with lengths up to 60 inches are available
- durable, lightweight clear polyester is 7mm thick
- offered blank and printed
- snap rail for quick graphic change and easy setup
- easy to wipe clean & disinfect
- hang with s-hook or nylon line (not included)
- assembled in USA



s-hook for easy suspension!



quick graphic change with snap rail edges



adjustable snap clips

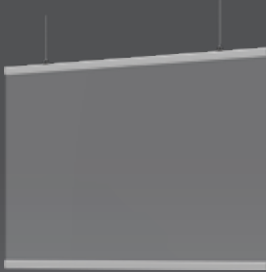


WARNING: Cancer
www.P65Warnings.ca.gov



HANGING SNEEZE GUARDS

custom sizes available!



36" w x 24" h



36" w x 30" h



36" w x 36" h



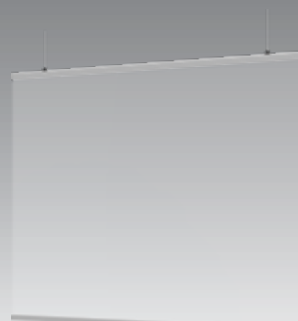
36" w x 48" h



48" w x 24" h



48" w x 30" h



48" w x 36" h



48" w x 48" h

	ITEM #	DESCRIPTION	PRICE
24" W 24" H	SNZ-POSNP-24-24-CP-KIT	Poster Snapper Kit, Unprinted/Clear	\$45.84
	SNZ-POSNP-24-24-G-KIT	Poster Snapper Kit, Printed	\$52.24
24" W 30" H	SNZ-POSNP-24-30-CP-KIT	Poster Snapper Kit, Unprinted/Clear	\$52.24
	SNZ-POSNP-24-30-G-KIT	Poster Snapper Kit, Printed	\$60.24
24" W 36" H	SNZ-POSNP-24-36-CP-KIT	Poster Snapper Kit, Unprinted/Clear	\$58.64
	SNZ-POSNP-24-36-G-KIT	Poster Snapper Kit, Printed	\$68.24
24" W 48" H	SNZ-POSNP-24-48-CP-KIT	Poster Snapper Kit, Unprinted/Clear	\$71.44
	SNZ-POSNP-24-48-G-KIT	Poster Snapper Kit, Printed	\$84.24
30" W 24" H	SNZ-POSNP-30-24-CP-KIT	Poster Snapper Kit, Unprinted/Clear	\$54.69
	SNZ-POSNP-30-24-G-KIT	Poster Snapper Kit, Printed	\$62.69
30" W 30" H	SNZ-POSNP-30-30-CP-KIT	Poster Snapper Kit, Unprinted/Clear	\$62.69
	SNZ-POSNP-30-30-G-KIT	Poster Snapper Kit, Printed	\$72.69
30" W 36" H	SNZ-POSNP-30-36-CP-KIT	Poster Snapper Kit, Unprinted/Clear	\$70.69
	SNZ-POSNP-30-36-G-KIT	Poster Snapper Kit, Printed	\$82.69
30" W 48" H	SNZ-POSNP-30-48-CP-KIT	Poster Snapper Kit, Unprinted/Clear	\$86.69
	SNZ-POSNP-30-48-G-KIT	Poster Snapper Kit, Printed	\$102.69

	ITEM #	DESCRIPTION	PRICE
36" W 24" H	SNZ-POSNP-36-24-CP-KIT	Poster Snapper Kit, Unprinted/Clear	\$64.75
	SNZ-POSNP-36-24-G-KIT	Poster Snapper Kit, Printed	\$74.35
36" W 30" H	SNZ-POSNP-36-30-CP-KIT	Poster Snapper Kit, Unprinted/Clear	\$74.35
	SNZ-POSNP-36-30-G-KIT	Poster Snapper Kit, Printed	\$86.35
36" W 36" H	SNZ-POSNP-36-36-CP-KIT	Poster Snapper Kit, Unprinted/Clear	\$83.95
	SNZ-POSNP-36-36-G-KIT	Poster Snapper Kit, Printed	\$98.35
36" W 48" H	SNZ-POSNP-36-48-CP-KIT	Poster Snapper Kit, Unprinted/Clear	\$103.15
	SNZ-POSNP-36-48-G-KIT	Poster Snapper Kit, Printed	\$122.35
48" W 24" H	SNZ-POSNP-48-24-CP-KIT	Poster Snapper Kit, Unprinted/Clear	\$84.90
	SNZ-POSNP-48-24-G-KIT	Poster Snapper Kit, Printed	\$97.70
48" W 30" H	SNZ-POSNP-48-30-CP-KIT	Poster Snapper Kit, Unprinted/Clear	\$97.70
	SNZ-POSNP-48-30-G-KIT	Poster Snapper Kit, Printed	\$113.70
48" W 36" H	SNZ-POSNP-48-36-CP-KIT	Poster Snapper Kit, Unprinted/Clear	\$110.50
	SNZ-POSNP-48-36-G-KIT	Poster Snapper Kit, Printed	\$129.70
48" W 48" H	SNZ-POSNP-48-48-CP-KIT	Poster Snapper Kit, Unprinted/Clear	\$136.10
	SNZ-POSNP-48-48-G-KIT	Poster Snapper Kit, Printed	\$161.70

MODULATE SNEEZE GUARD WALLS



MODULATE SNEEZE GUARD WALLS

- lightweight and portable sneeze guard/ protection/divider walls
- assembled dimensions = 36"w x 92.2"h x 15.7"d
- easy to wipe clean with disinfectant spray
- magnetic frames connect easily and can be positioned at various angles
- aluminum frame with snap buttons, offered magnetized or non
- 3 "infill" options available:
 - 3mm clear plexiglass (plex) top & bottom
 - 3mm clear plex top & opaque white 3mm PVC
 - opaque white 3mm PVC
- clear plex and PVC offered blank or printed
- artwork prints directly on the plex & PVC
- artwork on plex prints single-sided
- artwork on PVC prints single or double-sided

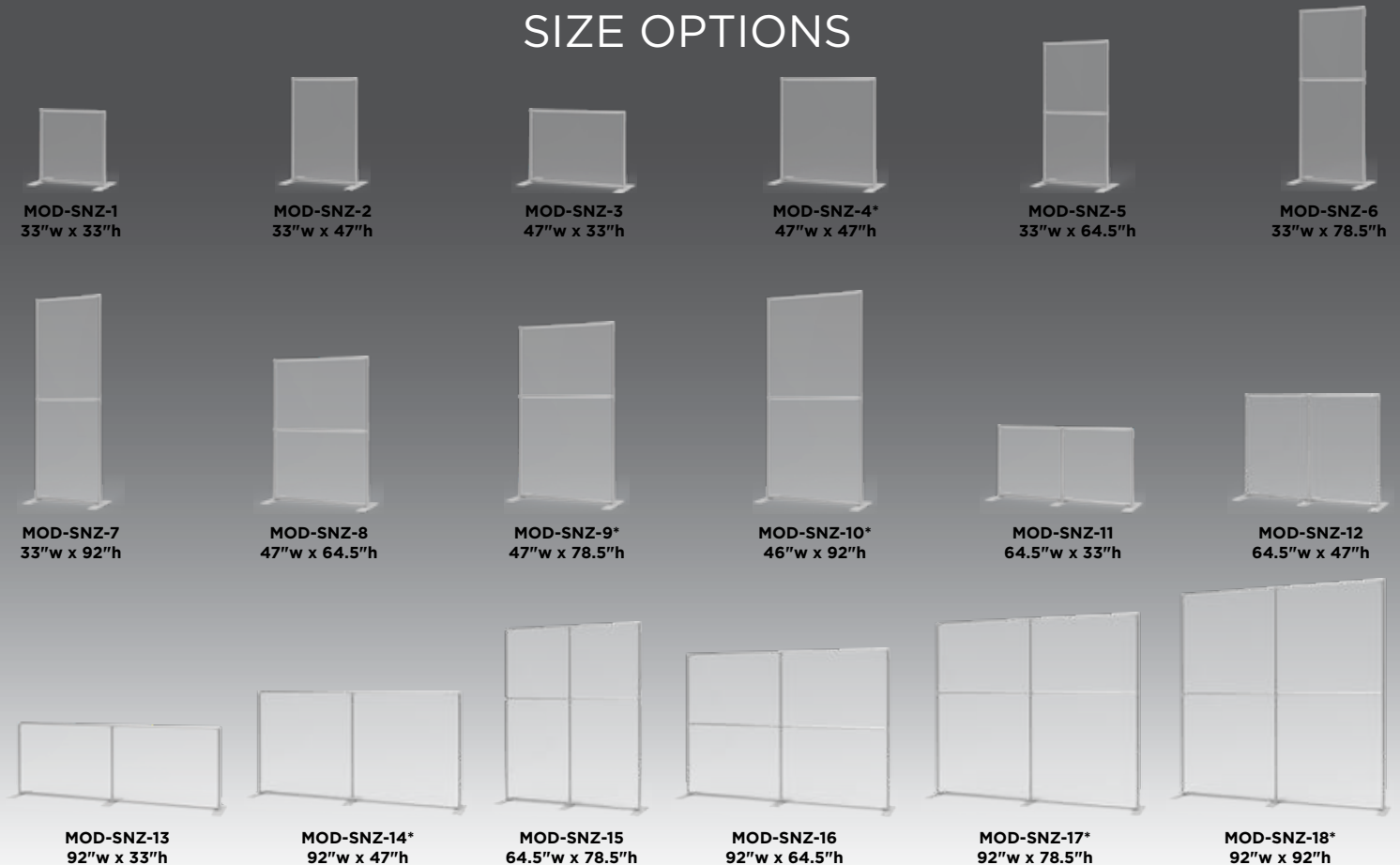
ITEM #	DESCRIPTION	1-10	11+
MOD-SNZ-GRD-P-P-M	Modulate Sneeze Guard Wall Magnetic Frame + Plex Panels Top & Bottom	\$598.95	\$539.06
MOD-SNZ-GRD-S-P-M	Modulate Sneeze Guard Wall Magnetic Frame + PVC Bottom + Plex Top Panel	\$553.57	\$498.21
MOD-SNZ-GRD-P-P	Modulate Sneeze Guard Wall Frame + Plex Panels Top & Bottom - Non Magnetic	\$513.50	\$462.16
MOD-SNZ-GRD-S-S-M	Modulate Sneeze Guard Wall Magnetic Frame + PVC Panels Top & Bottom	\$508.18	\$457.36
MOD-SNZ-GRD-S-S	Modulate Sneeze Guard Wall Frame + PVC Panels Top & Bottom - Non Magnetic	\$422.74	\$380.46
MOD-SNZ-GRD-S-P	Modulate Sneeze Guard Wall Frame + PVC Bottom + Plex Top Panel - Non Magnetic	\$468.13	\$421.31
MOD-SNZ-GRD-HW-M	Modulate Sneeze Guard Wall Magnetic Frame Only	\$452.42	\$407.18
MOD-SNZ-GRD-HW	Modulate Sneeze Guard Wall Frame Only - No Magnets	\$366.98	\$330.29
MOD-SNZ-GRD-PVC-3-G	Modulate PVC Panel Printed, Single-Sided	\$112.00	\$104.00
MOD-SNZ-GRD-PVC-3-GDBL	Modulate PVC Panel Printed, Double-Sided	\$160.00	\$152.00
MOD-SNZ-GRD-PLEX-3-G	Modulate Plex Panel Printed, Single-Sided	\$256.00	\$240.00



WARNING: Cancer
www.P65Warnings.ca.gov

MODULATE SNEEZE GUARD WALLS

SIZE OPTIONS



ITEM #	DESCRIPTION	1-10	11+
MOD-SNZ-1	33"w x 33"h Non-Magnetic Frame with Clear Plexiglass Infills	\$280.00	\$259.20
MOD-SNZ-2	33"w x 47"h Non-Magnetic Frame with Clear Plexiglass Infills	\$308.80	\$284.80
MOD-SNZ-3	47"w x 33"h Non-Magnetic Frame with Clear Plexiglass Infills	\$308.80	\$284.80
MOD-SNZ-4*	47"w x 47"h Non-Magnetic Frame with Clear Plexiglass Infills	\$344.00	\$312.00
MOD-SNZ-5	33"w x 64.5"h Non-Magnetic Frame with Clear Plexiglass Infills	\$376.00	\$334.40
MOD-SNZ-6	33"w x 78.5"h Non-Magnetic Frame with Clear Plexiglass Infills	\$412.80	\$372.80
MOD-SNZ-7	33"w x 92"h Non-Magnetic Frame with Clear Plexiglass Infills	\$443.20	\$395.20
MOD-SNZ-8	47"w x 64.5"h Non-Magnetic Frame with Clear Plexiglass Infills	\$438.40	\$390.40
MOD-SNZ-9*	47"w x 78.5"h Non-Magnetic Frame with Clear Plexiglass Infills	\$473.60	\$425.60

*due to plexiglass panel size(s), unit ships freight

ITEM #	DESCRIPTION	1-10	11+
MOD-SNZ-10*	46"w x 92"h Non-Magnetic Frame with Clear Plexiglass Infills	\$512.00	\$464.00
MOD-SNZ-11	64.5"w x 33"h Non-Magnetic Frame with Clear Plexiglass Infills	\$368.00	\$342.40
MOD-SNZ-12	64.5"w x 47"h Non-Magnetic Frame with Clear Plexiglass Infills	\$462.40	\$414.40
MOD-SNZ-13	92"w x 33"h Non-Magnetic Frame with Clear Plexiglass Infills	\$462.40	\$414.40
MOD-SNZ-14*	92"w x 47"h Non-Magnetic Frame with Clear Plexiglass Infills	\$544.00	\$496.00
MOD-SNZ-15	64.5"w x 78.5"h Non-Magnetic Frame with Clear Plexiglass Infills	\$627.20	\$561.60
MOD-SNZ-16	92"w x 64.5"h Non-Magnetic Frame with Clear Plexiglass Infills	\$641.60	\$577.60
MOD-SNZ-17*	92"w x 78.5"h Non-Magnetic Frame with Clear Plexiglass Infills	\$723.20	\$659.20
MOD-SNZ-18*	92"w x 92"h Non-Magnetic Frame with Clear Plexiglass Infills	\$800.00	\$728.00

(C) *due to plexiglass panel size(s), unit ships freight

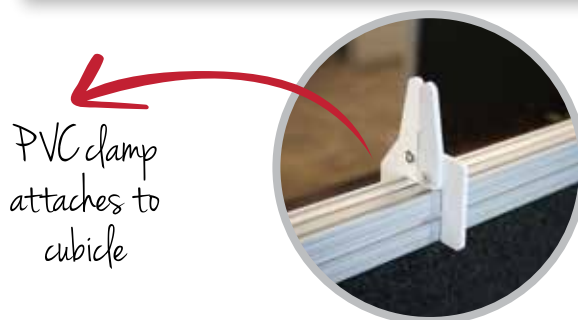
perfect partitions for office, beauty & barber shops, nail salons and spas

CUBICLE DIVIDERS, PROTECTION WALLS & BARRIERS

CUBICLE DIVIDERS

- clear, 6mm thick plexiglass dividers held in place by 3mm PVC clamps that attach to cubicle
- plexiglass dividers offered off-the-shelf in three sizes:
 - 23.5"w x 23.5"h
 - 47.5"w x 23.5"h
 - 35.5"w x 23.5"h
- custom plexiglass sizes also available maximum 95.5"w x 35.5"h
- kits include clear plexiglass divider & PVC clamps to hold plexiglass in place
- plexiglass features rounded radius on corners
- clamps are adjustable and span widths from 1" - 2.5"

ITEM #	DESCRIPTION	1-10	11+
SNZ-ADJ-2x2	23.5"w x 23.5"h 6mm Plexiglass Sneeze Guard with Adjustable Sintra Clamps	\$112.00	\$102.40
SNZ-ADJ-3x2	35.5"w x 23.5"h 6mm Plexiglass Sneeze Guard with Adjustable Sintra Clamps	\$153.60	\$139.20
SNZ-ADJ-4x2	47.5"w x 23.5"h 6mm Plexiglass Sneeze Guard with Adjustable Sintra Clamps	\$192.00	\$176.00
SNZ-ADJ-CUS-SM	CUSTOM up to 47.5"w x 23.5"h 6mm Plexiglass Sneeze Guard with Adjustable Sintra Clamps	\$216.00	\$200.00
SNZ-ADJ-CUS-MED	CUSTOM up to 47.5"w x 35.5"h 6mm Plexiglass Sneeze Guard with Adjustable Sintra Clamps	\$344.00	\$328.00
SNZ-ADJ-CUS-LG	CUSTOM up to 95.5"w x 35.5"h 6mm Plexiglass Sneeze Guard with Adjustable Sintra Clamps	\$600.00	\$552.00



KIOSK DIVIDER

- 38.15"w x 71.5"h x 11.81"d kiosk dividers, perfect to place in between check in stations in air terminals, ATM machines, gaming machines, restroom sinks and more
- dividers include 6mm clear plexiglass panels
- frame is lightweight aluminum extrusion
- heavy-duty steel base ensures stability

ITEM #	DESCRIPTION	1-10	11+
SNZ-KIOSK-DIVIDER-1800	Extrusion, Plexiglass Kiosk, Machine Divider	\$400.00	\$360.00



DESKTOP SNEEZE GUARDS

- clear, 1/8" (3mm) thick plexiglass dividers held in place by 15mm extrusion that sits on desk
- frame is lightweight anodized aluminum extrusion
- plexiglass dividers offered off-the-shelf in four sizes:
 - 24"w x 24"h with 12" return/side panel
 - 36"w x 24"h with 12" return/side panel
 - 48"w x 24"h with 12" return/side panel
 - 60"w x 32"h with 24" return/side panel

ITEM #	DESCRIPTION	1-10	11+
DSKTP-SNZ-2x2x1	24"w x 24"h 3mm Plexiglass Divider with 12" Side Panel	\$270.40	\$244.80
DSKTP-SNZ-3x2x1	36"w x 24"h 3mm Plexiglass Divider with 12" Side Panel	\$315.20	\$284.80
DSKTP-SNZ-4x2x1	48"w x 24"h 3mm Plexiglass Divider with 12" Side Panel	\$372.80	\$336.00
DSKTP-SNZ-5x2x2	60"w x 32"h 3mm Plexiglass Divider with 24" Side Panel	\$424.00	\$382.40



WARNING: Cancer
www.P65Warnings.ca.gov

CUBICLE DIVIDERS, PROTECTION WALLS & BARRIERS

WORKSTATION DIVIDER

- 47" w x 48" h x 15.75" d workstation dividers, perfect for offices, computer labs, libraries
- frame is 2" wide; foot is 15.75"
- adjustable knob ensures the hitch wall reaches the desktop sufficiently
- dividers include 1/8" clear plexiglass panels
- frame is lightweight aluminum extrusion

ITEM #	DESCRIPTION	1-10	11+
HITCH-WALL-1	Extrusion, plexiglass workstation divider	\$446.40	\$424.00



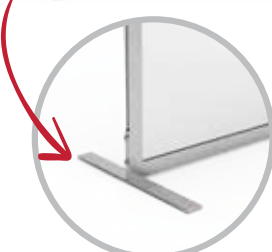
adjustable knob allows for secure placement

CUSTOM BARRIER WALLS FOR OFFICES

Work with us to customize and tailor your return to office needs. We offer table-top dividers/protectors, divider walls to place in between workstations, sliding, modular protection barriers and more. We offer many different sizes, all offered with clear plexiglass panels and your choice of aluminum feet or casters.



casters



aluminum feet

*get an estimate started today
for your office environment*



WARNING: Cancer
www.P65Warnings.ca.gov

STOCK & CUSTOM PRINTED MASKS





ADULT MASKS



FITTED ADULT MASK



PLEATED ADULT MASK

MASK SPECIFICATIONS

- 100% professionally made in the USA
- double-layered protection against dust, pollen, exhaust emissions, passive smoking fog vapor and moisture droplets
- **fitted mask** features outer layer of breathable polyester and inner layer of cotton
- **pleated mask** features two layers of breathable polyester with a pocket for a filter (filter not included)
- high quality, high-definition printed graphics
- machine washable and reusable
- pack of 3 of the same style & design
- ear loops are soft elastic straps
- comfort fit, expandable & breathable, contours your face and reduces eyeglass fogging
- unisex, one size fits most
- meets CDC recommendations for public face coverings
- this mask is not intended for medical use
- no returns on masks due to the nature of this product
- all masks should be machine washed before wearing

customize!

ADD YOUR LOGO OR DESIGN



made in the USA!

STOCK PATTERN

ADULT STOCK PRINTED	PRICE @ QTY
3 Pack (1x Pack of 3)	\$27.63
9 (3x Pack of 3)	\$74.18
18 (6x Pack of 3)	\$130.90
60 (20x Pack of 3)	\$416.93
120 (40x Pack of 3)	\$795.07
360 (120x Pack of 3)	\$2,327.04
720 (240x Pack of 3)	\$4,537.73

*3-pack and quantity pricing is based on the same style & design. Cannot mix & match. (C)

CUSTOM-PRINTED MASKS

ADULT CUSTOM PRINTED	PRICE @ QTY
30 (10x Pack of 3)	\$454.64
60 (20x Pack of 3)	\$813.55
120 (40x Pack of 3)	\$1,435.68
360 (120x Pack of 3)	\$4,115.62
720 (240x Pack of 3)	\$7,848.38
1,440 (480x Pack of 3)	\$15,313.92
2,160 (720x Pack of 3)	\$22,396.61
3,240 (1,080x Pack of 3)	\$32,733.50

*3-pack and quantity pricing is based on the same style & design. Cannot mix & match.



superior quality!

ADULT MASKS



STOCK PATTERNS



01: white daisy



02: cool metal



03: flower power



04: geo violet



05: bunch of roses



06: zebra



07: zebra color



08: leopard



09: camo black/white



10: camo



11: American flag



12: Chicago flag



13: America strong



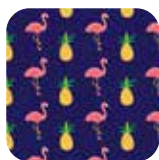
14: stars & stripes



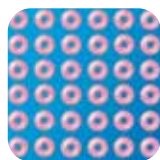
15: stars



16: music



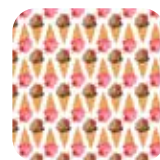
17: flamingo



18: donuts



19: watermelon



20: ice cream



21: sunglasses



22: lips



23: rainbow



24: blue black stripes



25: blue stripes



26: chevron white



27: chevron rainbow



28: teal snake skin



29: bright snake skin



30: floral



31: smiles



32: emojis



33: pandas



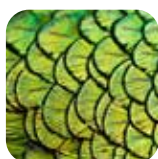
34: princess bear



35: shamrocks



36: blue peacock



37: green fish

pick a number & style
ADULT SIZE FITTED OR PLEATED



CHILD MASKS



made in the USA!

*promote school spirit
& customize with a school logo!*



MASK SPECIFICATIONS

- 100% professionally made in the USA
- double-layered protection against dust, pollen, exhaust emissions, passive smoking fog vapor and moisture droplets
- **pleated mask** features two layers of breathable polyester with a pocket for a filter (filter not included)
- high quality, high-definition printed graphics
- machine washable and reusable
- pack of 3 of the same style & design
- soft elastic can be tied (and cut) to fit each child appropriately
- comfort fit, expandable & breathable
- contours your face and reduces eyeglass fogging
- youth size recommended for children ages 5-11; adult size recommended for pre-teen (12+)
- meets CDC recommendations for public face coverings
- this mask is not intended for medical use
- no returns on masks due to the nature of this product
- all masks should be machine washed before wearing

STOCK PATTERN

YOUTH STOCK PRINTED	PRICE @ QTY
3 Pack (1x Pack of 3)	\$24.72
9 (3x Pack of 3)	\$65.46
18 (6x Pack of 3)	\$125.07
60 (20x Pack of 3)	\$397.54
120 (40x Pack of 3)	\$775.68
360 (120x Pack of 3)	\$2,268.86
720 (240x Pack of 3)	\$4,421.38
3,240 (1,080x Pack of 3)	\$19,388.16

*3-pack and quantity pricing is based on the same style & design. Cannot mix & match.

CUSTOM-PRINTED MASKS

YOUTH CUSTOM PRINTED	PRICE @ QTY
30 (10x Pack of 3)	\$294.16
60 (20x Pack of 3)	\$526.40
120 (40x Pack of 3)	\$928.94
360 (120x Pack of 3)	\$2,662.98
720 (240x Pack of 3)	\$5,078.22
1,440 (480x Pack of 3)	\$9,908.74
2,160 (720x Pack of 3)	\$14,491.52
3,240 (1,080x Pack of 3)	\$21,179.92

*3-pack and quantity pricing is based on the same style & design. Cannot mix & match.

YOUTH STOCK PATTERNS



04: geo violet



14: stars & stripes



18: donuts



20: ice cream



23: rainbow



24: blue black stripes



31: smiles



32: emojis



33: pandas



34: princess bear

SOCIAL DISTANCING CHAIR COVERS & FLOOR DECALS



SOCIAL DISTANCING CHAIR COVERS

STOCK DESIGNS

- graphic wraps over the top of the chair; white elastic stretches around the sides
- two material options available: Fabric (Display Polyester) & Outdoor Vinyl (Outdoor Scrim)
- outdoor vinyl chair cover is easy to wipe down and disinfect; fabric chair cover is machine washable
- 3 sizes available: Small 12" w x 12" h (12" w x 6" h per side), Medium 12" w x 24" h (12" w x 12" h per side) and Large 18" w x 24" h (18" w x 12" h per side)
- stock options and custom-designed chair covers offered
- all sizes available in packs of 8

encourage social distancing!

SCHOOLS, STADIUMS, BARS CAFÉS,
RESTAURANTS, POOLSIDE AND MORE



WHITE_THANKYOU



GRAY_NOSEATING



BLUE_6FTREMINER

ITEM #	FABRIC CHAIR COVER PRINTED ON 40Z. DISPLAY POLYESTER SEWN WITH ELASTIC ON BOTH SIDES	SOLD IN PACKS OF	1-48 PACK	49-96 PACK	96+ PACK
CHAIR-COVER-S-G-DP	12" w x 12" h Small Graphic (12" x 6" per side)	8	\$76.80 ea.	\$64.00 ea.	\$57.60 ea.
CHAIR-COVER-M-G-DP	12" w x 24" h Medium Graphic (12" x 12" per side)	8	\$153.60 ea.	\$128.00 ea.	\$115.20 ea.
CHAIR-COVER-L-G-DP	18" w x 24" h Large Graphic (18" x 12" per side)	8	\$230.40 ea.	\$192.00 ea.	\$172.80 ea.
ITEM #	VINYL CHAIR COVERS PRINTED ON 180Z. OUTDOOR SCRIM SEWN WITH ELASTIC ON BOTH SIDES	SOLD IN PACKS OF	1-48 PACK	49-96 PACK	96+ PACK
CHAIR-COVER-S-G-OB18	12" w x 12" h Full Graphic (12" x 6" per side)	8	\$51.20 ea.	\$44.80 ea.	\$41.60 ea.
CHAIR-COVER-M-G-OB18	12" w x 24" h Full Graphic (12" x 12" per side)	8	\$102.40 ea.	\$89.60 ea.	\$83.20 ea.
CHAIR-COVER-L-G-OB18	18" w x 24" h Full Graphic (18" x 12" per side)	8	\$153.60 ea.	\$134.40 ea.	\$124.80 ea.

(C)



white elastic tightly secures chair cover

CUSTOM DESIGNS

ITEM #	FABRIC CHAIR COVER PRINTED ON 40Z. DISPLAY POLYESTER SEWN WITH ELASTIC ON BOTH SIDES	SOLD IN PACKS OF	1-48 PACK	49-96 PACK	96+ PACK
CHAIR-COVER-S-CUS-G-DP	12" w x 12" h Full Graphic (12" x 6" per side)	8	\$140.80 ea.	\$128.00 ea.	\$121.60 ea.
CHAIR-COVER-M-CUS-G-DP	12" w x 24" h Full Graphic (12" x 12" per side)	8	\$217.60 ea.	\$192.00 ea.	\$179.20 ea.
CHAIR-COVER-L-CUS-G-DP	18" w x 24" h Full Graphic (18" x 12" per side)	8	\$294.40 ea.	\$256.00 ea.	\$236.80 ea.
ITEM #	VINYL CHAIR COVERS PRINTED ON 180Z. OUTDOOR SCRIM SEWN WITH ELASTIC ON BOTH SIDES	SOLD IN PACKS OF	1-48 PACK	49-96 PACK	96+ PACK
CHAIR-COVER-S-CUS-G-OB18	12" w x 12" h Full Graphic (12" x 6" per side)	8	\$115.20 ea.	\$108.80 ea.	\$105.60 ea.
CHAIR-COVER-M-CUS-G-OB18	12" w x 24" h Full Graphic (12" x 12" per side)	8	\$166.40 ea.	\$153.60 ea.	\$147.20 ea.
CHAIR-COVER-L-CUS-G-OB18	18" w x 24" h Full Graphic (18" x 12" per side)	8	\$217.60 ea.	\$198.40 ea.	\$188.80 ea.

(C)

customize!

WITH YOUR LOGO OR DESIGN



SOCIAL DISTANCING FLOOR DECALS



FOOTPRINT FLOOR DECALS

- circular adhesive vinyl stickers, contour cut
- matte surface is slip resistant & scratch resistant
- clean gently with a mild dish soap and water
- offered in red, orange, blue, green, yellow and purple
- footprints offered in sets of 10, any color
- custom designs also available

ITEM #	DESCRIPTION	1-10	11+
G-W-FLR-AVP-12D	Social Distance Sign 12" x 12"	\$11.20	\$10.40
G-W-FLR-AVP-18D	Social Distance Sign 18" x 18"	\$32.00	\$28.80
G-W-FLR-AVP-24D	Social Distance Sign 24" x 24"	\$41.60	\$38.40
G-W-FLR-AVP-36D	Social Distance Sign 36" x 36"	\$94.40	\$86.40
G-W-FLR-AVP-FP-10	Footprint - Any Color	\$80.00	\$72.00

(C)



6' APART FLOOR DECALS

- circular adhesive vinyl stickers, contour cut
- matte surface is slip resistant & scratch resistant
- clean gently with a mild dish soap and water
- custom designs also available

ITEM #	DESCRIPTION	1-10	11+
G-W-FLR-AVP-12D-6APART	6ft Apart Circle 12" x 12"	\$11.20	\$10.40
G-W-FLR-AVP-18D-6APART	6ft Apart Circle 18" x 18"	\$32.00	\$28.80
G-W-FLR-AVP-24D-6APART	6ft Apart Circle 24" x 24"	\$41.60	\$38.40
G-W-FLR-AVP-36D-6APART	6ft Apart Circle 36" x 36"	\$94.40	\$86.40

*perfect for schools,
businesses, stores and more!*

SOCIAL DISTANCING FLOOR DECALS



guide traffic!

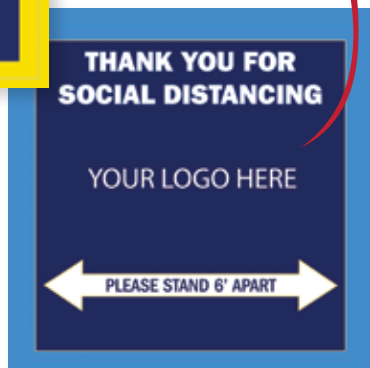
AISEWAY TRAFFIC FLOW FLOOR DECAL KIT

- kit includes one of each rectangular sign & 10 arrows
- adhesive vinyl stickers, contour cut
- rectangular signs are 18"w x 12"h
- arrow signs are 6"w x 8"h
- custom designs also available

ITEM #	DESCRIPTION	1-10	11+
AISE-DIR-KIT-GFX	Aisle Direction Kit	\$153.60	\$142.40



your logo or design here!



slip & scratch resistant!

BE SMART & CUSTOMIZABLE FLOOR DECALS

- adhesive vinyl stickers, contour cut
- 12", 18", 24" and 36" square sign options
- custom designs also available

ITEM #	DESCRIPTION	1-10	11+
G-W-FLR-AVP-12X12-BESMART	Be Smart Square Sign 12" x 12"	\$11.20	\$10.40
G-W-FLR-AVP-18X18-BESMART	Be Smart Square Sign 18" x 18"	\$32.00	\$28.80
G-W-FLR-AVP-24X24-BESMART	Be Smart Square Sign 24" x 24"	\$41.60	\$38.40
G-W-FLR-AVP-36X36-BESMART	Be Smart Square Sign 36" x 36"	\$94.40	\$86.40
G-W-FLR-AVP-12X12-CUS-LOGO	Customer Logo Sign 12" x 12"	\$12.80	\$12.00
G-W-FLR-AVP-18X18-CUS-LOGO	Customer Logo Sign 18" x 18"	\$38.40	\$36.80
G-W-FLR-AVP-24X24-CUS-LOGO	Customer Logo Sign 24" x 24"	\$51.20	\$48.00
G-W-FLR-AVP-36X36-CUS-LOGO	Customer Logo Sign 36" x 36"	\$115.20	\$108.80

(C)



custom options available!

ONE-WAY AISLE ARROW FLOOR DECAL

- adhesive vinyl, contour cut
- 8.75"w x 12"h
- color combinations are flexible

ITEM #	DESCRIPTION	1-10	11+
G-W-FLR-AVP-LRG-ARROW	One-Way Contour Arrow	\$11.20	\$10.40

(C)

OUTDOOR CURBSIDE SIGNS, FLAGS & BANNERS



OUTDOOR CURBSIDE SIGNS, FLAGS & BANNERS

ZOOM™ FLEX FLAGS

- can be used indoors or outdoors
- comes in four shapes: teardrop, feather, straight & edge
- graphic rotates in wind
- water ring base support adds stability to cross base (optional upgrades)
- includes ground stake only

zoom fiber poles provide ultimate flexibility

graphic printed on flag material



ITEM #	DESCRIPTION	PRICE
P02A0024	Small Teardrop Single-Sided Graphic Kit	\$95.92
	Hardware only	\$44.72
P02A0026	Small Feather Single-Sided Graphic Kit	\$95.92
	Hardware only	\$44.72
P02A0028	Small Straight Single-Sided Graphic Kit	\$95.92
	Hardware only	\$44.72
P02A0030	Small Edge Single-Sided Graphic Kit	\$95.92
	Hardware only	\$44.72
P02A0032	Medium Teardrop Single-Sided Graphic Kit	\$111.92
	Hardware only	\$49.52
P02A0034	Medium Feather Single-Sided Graphic Kit	\$111.92
	Hardware only	\$49.52
P02A0036	Medium Straight Single-Sided Graphic Kit	\$111.92
	Hardware only	\$49.52
P02A0038	Medium Edge Single-Sided Graphic Kit	\$111.92
	Hardware only	\$49.52
P02A0040	Large Teardrop Single-Sided Graphic Kit	\$159.92
	Hardware only	\$52.72
P02A0042	Large Feather Single-Sided Graphic Kit	\$159.92
	Hardware only	\$52.72
P02A0044	Large Straight Single-Sided Graphic Kit	\$159.92
	Hardware only	\$52.72
P02A0046	Large Edge Single-Sided Graphic Kit	\$159.92
	Hardware only	\$52.72

*kits include hardware & single-sided graphic

ZOOM FLAG BASES



ITEM #	DESCRIPTION	PRICE
ZOOM-FLX-FB	Fillable Ground Base Hardware	\$71.92
ZOOM-FLX-STCK-BASE	Stackable Base	\$55.92

choose the base best for the environment



All Outdoor products have a one year limited frame warranty and are eco-friendly.

OUTDOOR CURBSIDE SIGNS, FLAGS & BANNERS

WIND DANCER MINI

- adjustable graphic height
= up to 6'
- hollow base can be filled with
either water or sand
- optional carry bag

ITEM #	DESCRIPTION	PRICE
P02A0056	Wind Dancer Mini Single-Sided Graphic Kit	\$126.32
WIND-MIN	Hardware only	\$47.92

*kits include hardware & graphic



WIND DANCER LT

- adjustable graphic height
= up to 8'8"
- hollow base can be filled with
either water or sand
- optional carry bag

ITEM #	DESCRIPTION	PRICE
P02A0060	Wind Dancer LT Single-Sided Long Graphic Kit	\$343.92
WIND-LT	Hardware only	\$207.92

*kits include hardware & graphic



heavy duty water/sand
fillable bases



All Outdoor products have a one year limited hardware warranty and are eco-friendly.

OUTDOOR CURBSIDE SIGNS, FLAGS & BANNERS

BLIZZARD

- min width x min height:
23.5"w x 63.25"h
- min width x max height:
23.5"w x 80"h
- max width x min height:
40"w x 57"h
- max width x max height:
40"w x 74.5"h
- outdoor banner stand
- outdoor scrim vinyl
graphic material
- easy grommet graphic
attachment



ITEM #	DESCRIPTION	PRICE
P02A0065	23.5"w x 80"h Single-Sided Graphic Kit	\$212.72
BLZD	Hardware only	\$145.52

*kits include hardware & graphic

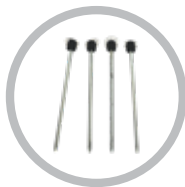


fill the base with water or sand



THUNDER

- visual graphic area
= approx. 33.5"w x 78.75"h
- double-sided outdoor
retractable banner stand
- large twist-lock feet
- stakes included to
secure to ground
- snap-top graphic rail
- 3-piece bungee pole
- outdoor scrim vinyl
graphic material



stakes included to
secure in the grass!

ITEM #	DESCRIPTION	PRICE
P02A0068	Banner Stand Hardware, Two Scrim Vinyl Graphics, Carry Bag	\$287.92
THUNDER-1	Hardware only	\$153.52

*kits include hardware & graphic



heavy-duty outdoor
retractable banner stand



All Outdoor products have a one year limited frame warranty and are eco-friendly.

OUTDOOR CURBSIDE SIGNS, FLAGS & BANNERS

ONE
YEAR
GL
6MO



includes wheels for ease of moving!

WHIRLWIND

- 30.75" w x 44.12" h x 19.5" d
- front-loading snap frames constructed from aluminum & powder-coated steel
- single or double-sided PVC graphics
- includes clear lens cover
- dual-spring design flexes to withstand wind gusts
- compact durable base can be filled with water or sand for extra stability
- integrated wheel set

ITEM #	DESCRIPTION	PRICE
P02A0069	Single-Sided Graphic Kit	\$217.52
P02A0070	Double-Sided Graphic Kit	\$347.12

*kits include hardware & graphic



STOWAWAY

- lightweight, high visual impact display stand
- indoor/outdoor use
- carbon fiber poles easily assemble
- includes carry bag & 4 ground stakes
- no tools required
- custom printed graphics

ITEM #	DESCRIPTION	PRICE
P02A0082	Small Stowaway Display	\$458.42
P02A0083	Large Stowaway Display	\$699.70
P02A0084	X-Large Stowaway Display	\$1,231.17

*kits include hardware & graphic

(C)



TWIRL

- 26.41" w x 79" h x 1" d
- lightweight, fiberglass rod frame
- double-sided pillowcase fabric graphic
- ground stake connection allows for twirl movement

ITEM #	DESCRIPTION	PRICE
P02A0106	Frame, Double-Sided Pillowcase Fabric Graphics, Carry Bag	\$185.46

*kits include hardware & graphic



MONSOON

- visual graphic area = approx. 92.125" w x 32" h
- semi-portable single or double-sided billboard
- easy grommet graphic attachment
- includes ground stakes & bungee rope

ITEM #	DESCRIPTION	PRICE
P02A0023	Frame, Two Outdoor Scrim Vinyl Graphics, Carry Bag	\$343.98

*kits include hardware & graphic

(C)





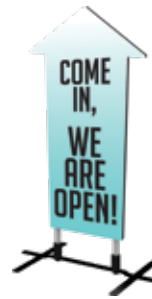
OUTDOOR CURBSIDE SIGNS, FLAGS & BANNERS

CONTOUR

- two printed graphics (front & back) available in six unique shapes
- choose from plate base or hollow, fillable base with dual-spring design to flex and withstand wind gusts
- hollow, fillable base can be filled with water or sand for added stability
- graphics easily secure to either base using hook & loop

ITEM #	DESCRIPTION	PRICE
P02A0133	Contour Arrow Up, Plate Base - Single-Sided Kit	\$211.52
P02A0109	Contour Arrow Up, Plate Base - Double-Sided Kit	\$279.92
P02A0132	Contour Arrow Up, Water Base - Single-Sided Kit	\$195.52
P02A0110	Contour Arrow Up, Water Base - Double-Sided Kit	\$263.92
P02A0135	Contour Arrow Side, Plate Base - Single-Sided Kit	\$191.92
P02A0111	Contour Arrow Side, Plate Base - Double-Sided Kit	\$239.92
P02A0134	Contour Arrow Side, Water Base - Single-Sided Kit	\$175.92
P02A0112	Contour Arrow Side, Water Base - Double-Sided Kit	\$223.92
P02A0131	Contour Bottle, Plate Base - Single-Sided Kit	\$198.32
P02A0115	Contour Bottle, Plate Base - Double-Sided Kit	\$252.72
P02A0130	Contour Bottle, Water Base - Single-Sided Kit	\$182.32
P02A0116	Contour Bottle, Water Base - Double-Sided Kit	\$236.72
P02A0137	Contour Wave 1, Plate Base - Single-Sided Kit	\$201.52
P02A0113	Contour Wave 1, Plate Base - Double-Sided Kit	\$259.12
P02A0136	Contour Wave 1, Water Base - Single-Sided Kit	\$185.52
P02A0114	Contour Wave 1, Water Base - Double-Sided Kit	\$243.12
P02A0139	Contour Wave 2, Plate Base - Single-Sided Kit	\$198.32
P02A0119	Contour Wave 2, Plate Base - Double-Sided Kit	\$252.72
P02A0138	Contour Wave 2, Water Base - Single-Sided Kit	\$188.72
P02A0120	Contour Wave 2, Water Base - Double-Sided Kit	\$249.52
P02A0141	Contour Circle, Plate Base - Single-Sided Kit	\$190.32
P02A0117	Contour Circle, Plate Base - Double-Sided Kit	\$236.72
P02A0140	Contour Circle, Water Base - Single-Sided Kit	\$174.32
P02A0118	Contour Circle, Water Base - Double-Sided Kit	\$220.72

*kits include hardware & graphic



ARROW UP



ARROW SIDE



BOTTLE



WAVE 1



CIRCLE



WAVE 2

CHOOSE YOUR BASE



Plate Base

OR



Fillable Base



ACE-2

- visual graphic area = 28.87" w x 35" h
- double-sided aluminum A-frame sign holder with black plastic corner grips
- clear dry erase graphic lenses included
- front-loading snap frames for easy graphic swaps
- quick, toolless assembly

ITEM #	DESCRIPTION	PRICE
P02A0105	Double-Sided Graphic Kit	\$167.92
ACE-2	Hardware only	\$87.92

*kits include hardware & graphic



SWING SIGN

- visual graphic area = 19.63" w x 29.5" h
- single or double-sided graphic, printed on 6mm PVC
- black, steel portable sign with integrated wheeled base
- hollow plastic base can be filled with sand or water
- double-ring mounting system holds graphic in place while allowing it to swing

ITEM #	DESCRIPTION	PRICE
P02A0108	Double-Sided Graphic Kit	\$159.92

*kits include hardware & graphic

OUTDOOR HANGING BANNERS





OUTDOOR HANGING BANNERS

7 OZ. MESH VINYL SINGLE-SIDED

7 oz. mesh vinyl banners are ideal for a long-lasting outdoor display. Banners allow wind to stream through while maintaining vibrant colors and clear messaging.

ITEM #	DESCRIPTION	PRICE
4WX2H-G-MESH	4'w x 2'h Vinyl Banner	\$35.20
5WX3H-G-MESH	5'w x 3'h Vinyl Banner	\$67.20
6WX2H-G-MESH	6'w x 2'h Vinyl Banner	\$52.80
6WX3H-G-MESH	6'w x 3'h Vinyl Banner	\$80.00
6WX4H-G-MESH	6'w x 4'h Vinyl Banner	\$105.60
8WX3H-G-MESH	8'w x 3'h Vinyl Banner	\$105.60
8WX4H-G-MESH	8'w x 4'h Vinyl Banner	\$140.80
10WX3H-G-MESH	10'w x 3'h Vinyl Banner	\$132.80
10WX4H-G-MESH	10'w x 4'h Vinyl Banner	\$176.00



13 OZ. SCRIM SINGLE-SIDED

Durable and weather-resistant, scrim hanging banners are ideal for long-term outdoor use.

ITEM #	DESCRIPTION	PRICE
4WX2H-G-OB13	4'w x 2'h Vinyl Banner	\$35.20
5WX3H-G-OB13	5'w x 3'h Vinyl Banner	\$67.20
6WX2H-G-OB13	6'w x 2'h Vinyl Banner	\$52.80
6WX3H-G-OB13	6'w x 3'h Vinyl Banner	\$80.00
6WX4H-G-OB13	6'w x 4'h Vinyl Banner	\$105.60
8WX3H-G-OB13	8'w x 3'h Vinyl Banner	\$105.60
8WX4H-G-OB13	8'w x 4'h Vinyl Banner	\$140.80
10WX3H-G-OB13	10'w x 3'h Vinyl Banner	\$132.80
10WX4H-G-OB13	10'w x 4'h Vinyl Banner	\$176.00



18 OZ. SCRIM VINYL SINGLE & DOUBLE-SIDED

18oz scrim banners are long-lasting and can be made single or double-sided.

ITEM #	DESCRIPTION	PRICE
2WX4H-G-OB18-GDBL	2'w x 4'h 18oz. Double-Sided Scrim	\$57.60
2WX6H-G-OB18-GDBL	2'w x 6'h 18oz. Double-Sided Scrim	\$86.40
3WX6H-G-OB18-GDBL	3'w x 6'h 18oz. Double-Sided Scrim	\$129.60
4WX2H-G-OB18	4'w x 2'h 18oz. Single-Sided Scrim	\$35.20
5WX3H-G-OB18	5'w x 3'h 18oz. Single-Sided Scrim	\$67.20
6WX2H-G-OB18	6'w x 2'h 18oz. Single-Sided Scrim	\$52.80
6WX2H-G-OB18-GDBL	6'w x 2'h 18oz. Double-Sided Scrim	\$86.40
6WX3H-G-OB18	6'w x 3'h 18oz. Single-Sided Scrim	\$80.00
6WX3H-G-OB18-GDBL	6'w x 3'h 18oz. Double-Sided Scrim	\$129.60
6WX4H-G-OB18	6'w x 4'h 18oz. Single-Sided Scrim	\$105.60
8WX3H-G-OB18	8'w x 3'h 18oz. Single-Sided Scrim	\$105.60
8WX3H-G-OB18-GDBL	8'w x 3'h 18oz. Double-Sided Scrim	\$172.80
8WX4H-G-OB18	8'w x 4'h 18oz. Single-Sided Scrim	\$140.80
8WX4H-G-OB18-GDBL	8'w x 4'h 18oz. Double-Sided Scrim	\$230.40
10WX3H-G-OB18	10'w x 3'h 18oz. Single-Sided Scrim	\$132.80
10WX4H-G-OB18	10'w x 4'h 18oz. Single-Sided Scrim	\$176.00

6.5 OZ. OUTDOOR CANVAS SINGLE-SIDED

Outdoor canvas banners are water and UV resistant, making them a top choice for use in many outdoor events.

ITEM #	DESCRIPTION	PRICE
4WX2H-G-ODC	4'w x 2'h	\$51.20
5WX3H-G-ODC	5'w x 3'h	\$96.00
6WX2H-G-ODC	6'w x 2'h	\$76.80
6WX3H-G-ODC	6'w x 3'h	\$115.20
6WX4H-G-ODC	6'w x 4'h	\$153.60
8WX3H-G-ODC	8'w x 3'h	\$153.60
8WX4H-G-ODC	8'w x 4'h	\$204.80
10WX3H-G-ODC	10'w x 3'h	\$192.00
10WX4H-G-ODC	10'w x 4'h	\$256.00



call for large quantity pricing!

OUTDOOR TENTS



ZOOM™ ECONOMY (STEEL) 5' POPUP TENT

Features include:

- opens to a base size of 4.7' x 4.7'
- black powder coated economy steel tent frame is completely self-contained with no loose parts
- canopies are water and UV resistant
- hardware kit includes frame, stakes, guy lines and rolling carry bag
- canopy kits include custom printed canopy, hardware, guy lines and rolling carry bag

ITEM #	DESCRIPTION	PRICE
P02A0089	Printed Canopy Graphic & Hardware Kit	\$511.84
ZM-TNT-ECO-1.5MX1.5M-FRM-SQU-2	Hardware only	\$207.92



call for quantities over 100

tent light kit available



quick & easy assembly in minutes!



ZOOM™ ECONOMY (STEEL) 10' POPUP TENT

Features include:

- opens to a base size of 9.8' x 9.8'
- black powder-coated economy steel frame is completely self-contained with no loose parts
- canopies, half walls and full walls offered in 5 stock colors and can also be custom printed; water & UV resistant
- hardware only kit includes frame, stakes, guy lines and rolling carry bag
- canopy kits include canopy (standard colors or custom printed), hardware frame, stakes, guy lines and rolling carry bag
- half and full walls sold separately & interchangeable between economy & standard frames

ITEM #	DESCRIPTION	PRICE
P02A0092	Printed Canopy Graphic & Hardware Kit	\$735.84
ZM-TNT-ECO-3MX3M-FRM-SQU-2	Hardware only	\$239.92

seams feature rubber beading to repel water



All Outdoor products have a one year limited frame warranty and are eco-friendly.

OUTDOOR TENTS

ZOOM™ STANDARD (ALUMINUM) 10' POPUP TENT

Features include:

- 10' opens to a base size of 9.8' x 9.8'
- **rust-resistant**, lightweight aluminum frame is completely self-contained with no loose parts
- custom printed canopies are water & UV resistant
- hardware only kit includes frame, stakes, guy lines and rolling carry bag
- canopy kits include water-resistant canopy, hardware frame, stakes, guy lines and rolling carry bag
- half and full walls sold separately & interchangeable between economy & standard frames

ITEM #	DESCRIPTION	PRICE
P02A0097	Printed Canopy Graphic & Hardware Kit	\$815.84
ZM-TNT-STD-3MX3M-FRM-HEX	Hardware only	\$319.92



ZOOM™ 10' HALF & FULL WALLS

Features include:

- compatible with both Zoom™ Standard and Economy tent frames
- half wall kit includes half wall panel, half wall pole and two brackets
- full wall kits include full wall panel
- graphics are water and UV resistant

ITEM #	DESCRIPTION	PRICE
ZM-TNT-1.5MX1.5M-FLL-WLL-G	5' Single-Sided Tent Full Wall	\$103.92
ZM-TNT-3MX3M-FLL-WLL-G	10' Single-Sided Tent Full Wall	\$199.92
ZM-TNT-3MX6M-FLL-WLL-G	20' Single-Sided Tent Full Wall	\$375.92
ZM-TNT-3MX3M-HLF-WLL-G	10' Single-Sided Tent Half Wall	\$79.92
ZM-TNT-3MX6M-HLF-WLL-G	20' Single-Sided Tent Half Wall (kit of 2 - 10' half walls)	\$158.32



*tents for restaurants, outdoor
classrooms and more!*



All Outdoor products have a one year limited frame warranty and are eco-friendly.

OUTDOOR TENTS



ZOOM™ 20' (ALUMINUM) POPUP TENTS

Features include:

- 20' opens to a base size of 9.8' x 19.6'
- **rust-resistant**, lightweight aluminum frame is completely self-contained with no loose parts
- custom printed canopies are water & UV resistant
- hardware only kit includes frame, stakes, guy lines and rolling carry bag
- canopy kits include water-resistant canopy, hardware frame, stakes, guy lines and rolling carry bag
- half and full walls sold separately

ITEM #	DESCRIPTION	PRICE
P02A0113	Printed Canopy Graphic & Hardware Kit	\$1,303.84
ZM-TNT-STD-3MX6M-FRM-HEX	Hardware only	\$823.90

make sure it's aluminum!

NEVER RUSTS, LASTS LONG



All Outdoor products have a one year limited frame warranty and are eco-friendly.

INTERIOR BANNERS, STANDS & SIGNS





RETRACTABLE BANNER STANDS



IMAGINE 800

- variable graphic height = 30.5"- 83.35"
- graphic tensioner
- integrated pole storage
- interchangeable graphic cassette
- adjustable feet on base
- telescopic pole



31.5"
WIDE

ITEM #	DESCRIPTION	PRICE
P01Q0011	31.5"w Economy Anti-curl Vinyl Kit	\$226.80
IMG-800-S	Hardware only	\$156.40

*kits include hardware, graphic & carry bag



BARRACUDA 800

- variable graphic height = 60"- 83"
- anodized silver base
- toolless quick rail
- graphic tensioner
- adjustable leveling feet
- hybrid bungee/telescopic pole
- includes carry bag



31.5"
WIDE

ITEM #	DESCRIPTION	PRICE
P01Q0003	31.5"w Economy Anti-curl Vinyl Kit	\$163.60
BCD-800-S-1	Hardware only	\$93.20

*kits include hardware, graphic & carry bag



ORIENT 800

- variable graphic height = 60.5"- 83.25"
- anodized silver base
- toolless quick rail combines the ease of a snap rail with the reassurance of an adhesive fixing
- molded end caps
- adjustable leveling feet
- hybrid bungee/telescopic pole
- includes carry bag



31.5"
WIDE

ITEM #	DESCRIPTION	PRICE
P01R0017	31.5"w Economy Anti-curl Vinyl Kit	\$143.02
ONT-800-S-4	Hardware only	\$72.62

*kits include hardware, graphic & carry bag



BLADE LITE 800

- 31.5"-59" variable graphic height = 60"- 83.25"
- silver base with chrome-finish end caps
- toolless quick rail combines the ease of a snap rail with the reassurance of an adhesive fixing
- weighted base for stability
- adjustable leveling feet
- hybrid bungee/telescopic pole
- includes carry bag



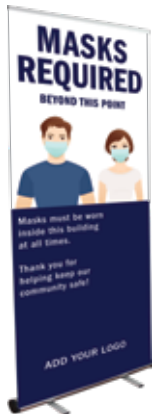
31.5"
WIDE

ITEM #	DESCRIPTION	PRICE
P01R0005	31.5"w Economy Anti-curl Vinyl Kit	\$141.26
BLD-LT-800-1	Hardware only	\$70.86

*kits include hardware, graphic & carry bag

RETRACTABLE BANNER STANDS

90
DAY



PHOENIX 850

- standard graphic height = 79"
- anodized silver base
- swivel feet & snap top graphic rail
- 3-piece bungee pole
- includes carry bag



33.5"
WIDE

ITEM #	DESCRIPTION	PRICE
P03R0029	33.5"w Economy Anti-curl Vinyl Kit - Silver	\$119.34
PHX-850-S	Silver hardware only	\$44.14

*kits include hardware, graphic & carry bag



MOSQUITO 850

- standard graphic height = 78.5"
- swivel feet & snap top graphic rail
- 3-piece bungee pole
- includes carry bag



33.5"
WIDE

ITEM #	DESCRIPTION	PRICE
P03R0029	33.5"w Economy Anti-curl Vinyl Kit - Silver	\$116.14
MSQT-850	Silver hardware only	\$40.94

*kits include hardware, graphic & carry bag



MOSQUITO 800

- standard graphic height = 78.5"
- anodized silver or black base options (31.5" only)
- swivel feet & snap top graphic rail
- 3-piece bungee pole
- includes carry bag



31.5"
WIDE

ITEM #	DESCRIPTION	PRICE
P03R0007	31.5"w Economy Anti-curl Vinyl Kit - Silver	\$108.72
MSQT-800-S	Silver hardware only	\$38.32
P03R0009	31.5"w Economy Anti-curl Vinyl Kit - Black	\$108.72
MSQT-800-B	Black hardware only	\$38.32

*kits include hardware, graphic & carry bag



MOSQUITO LITE

- standard graphic height = 78.5"
- anodized silver base
- swivel foot & snap top graphic rail
- 3-piece bungee pole
- includes carry bag



31.5"
WIDE

ITEM #	DESCRIPTION	PRICE
P03R0015	31.5"w Economy Anti-curl Vinyl Kit	\$101.98
MSQT-LT-800	Hardware only	\$31.58

*kits include hardware, graphic & carry bag



ALL RETRACTABLE BANNER STANDS
COME IN A PORTABLE BAG



INDOOR HANGING BANNERS

13 OZ. ANTI-CURL VINYL SINGLE-SIDED

Durable and lightweight, the single-sided 13 oz. anti-curl vinyl banner is a perfect choice for displays in high-traffic environments.

ITEM #	DESCRIPTION	PRICE
4WX2H-G-ACV	4'w x 2'h Vinyl Banner	\$35.20
5WX3H-G-ACV	5'w x 3'h Vinyl Banner	\$67.20
6WX2H-G-ACV	6'w x 2'h Vinyl Banner	\$52.80
6WX3H-G-ACV	6'w x 3'h Vinyl Banner	\$80.00
6WX4H-G-ACV	6'w x 4'h Vinyl Banner	\$105.60
8WX3H-G-ACV	8'w x 3'h Vinyl Banner	\$105.60
8WX4H-G-ACV	8'w x 4'h Vinyl Banner	\$140.80
10WX3H-G-ACV	10'w x 3'h Vinyl Banner	\$132.80
10WX4H-G-ACV	10'w x 4'h Vinyl Banner	\$176.00



also available in custom sizes

FABRIC SINGLE-SIDED

Display Poly and Oxford fabric hanging banners are quality choices for indoor advertisements.

ITEM #	DESCRIPTION	PRICE
4WX2H-G-DP	4'w x 2'h Display Poly	\$44.80
4WX2H-G-OX	4'w x 2'h 8oz. Oxford	\$64.00
5WX3H-G-DP	5'w x 3'h Display Poly	\$84.80
5WX3H-G-OX	5'w x 3'h 8oz. Oxford	\$120.00
6WX2H-G-DP	6'w x 2'h Display Poly	\$67.20
6WX2H-G-OX	6'w x 2'h 8oz. Oxford	\$96.00
6WX3H-G-DP	6'w x 3'h Display Poly	\$100.80
6WX3H-G-OX	6'w x 3'h 8oz. Oxford	\$144.00
6WX4H-G-DP	6'w x 4'h Display Poly	\$134.40
6WX4H-G-OX	6'w x 4'h 8oz. Oxford	\$192.00
8WX3H-G-DP	8'w x 3'h Display Poly	\$134.40
8WX3H-G-OX	8'w x 3'h 8oz. Oxford	\$192.00
8WX4H-G-DP	8'w x 4'h Display Poly	\$179.20
8WX4H-G-OX	8'w x 4'h 8oz. Oxford	\$256.00
10WX3H-G-DP	10'w x 3'h Display Poly	\$168.00
10WX3H-G-OX	10'w x 3'h 8oz. Oxford	\$240.00
10WX4H-G-DP	10'w x 4'h Display Poly	\$224.00
10WX4H-G-OX	10'w x 4'h 8oz. Oxford	\$320.00



same pricing for all finishing options!

INDOOR & OUTDOOR FINISHING STYLES



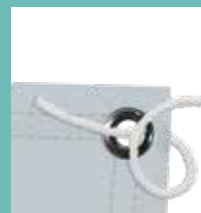
no finishing
(vinyl)



hem only
(fabric)



hem &
#3 grommet



rope &
#3 grommet



3" pole pocket

TRAPPA POSTER FRAMES & WAYFINDING SIGNS



TRAPPA POSTER FRAME



- black or silver anodized finish with precision mitered corners
- spring loaded aluminum extrusions mounted to a high-impact polystyrene backer
- trappa frame edges snap open from the front to allow quick and easy graphic changes with no tools required
- available in a wide range of standard sizes & includes a clear anti-glare lens
- custom sizes also offered

	ITEM #	DESCRIPTION	PRICE
8.5"W 11"H	TRP2-1	Black Frame Silver Frame	\$18.05 \$18.05
11"W 14"H	TRP2-2	Black Frame Silver Frame	\$21.14 \$21.14
11"W 17"H	TRP2-11	Black Frame Silver Frame	\$23.01 \$23.01
12"W 18"H	TRP2-12	Black Frame Silver Frame	\$24.75 \$24.75
16"W 20"H	TRP2-4	Black Frame Silver Frame	\$28.61 \$28.61
18"W 24"H	TRP2-10	Black Frame Silver Frame	\$33.82 \$33.82
20"W 24"H	TRP2-5	Black Frame Silver Frame	\$34.94 \$34.94
22"W 28"H	TRP2-7	Black Frame Silver Frame	\$51.74 \$51.74
24"W 30"H	TRP2-8	Black Frame Silver Frame	\$41.39 \$41.39
30"W 40"H	TRP2-9	Black Frame Silver Frame	\$71.63 \$71.63

SIGNPRO®

S Y S T E M S

INTERIOR WAYFINDING SIGN SOLUTIONS



- \\ Wayfinding Sign Solutions for directional guidance in offices, hospitals, retail environments, schools and more to help visitors navigate through buildings with ease.
- \\ Ever-increasing custom capabilities; we can build frames and signs suited to your exact specifications
- \\ Engineered, supplied & **manufactured in the USA.**
- \\ Fast. Affordable. Excellent Quality.



- \\ **Made in USA**
- \\ **Fast production**
- \\ **Quick ship**

INTERIOR BANNERS, STANDS & SIGNS

WAYFINDING SIGNS



ADVOCATE

- chrome finish holder, post and circular base
- holds 8.5" w x 11" h sign
- telescoping post offers variable heights from up to 30.5" - 48"
- frame can be rotated 360° or at any desired angle

ITEM #	DESCRIPTION	PRICE
ADVOCATE	30.5" - 48" Aluminum 7.75" w x 10.25" h Sign Holder	\$69.25



SNAPPER STAND

- snap-edge 11" w x 17" h sign frame, portrait or landscape orientation
- holds 11" w x 17" h poster, recommended thickness 1/32"
- includes clear non-glare protective lens
- two-piece collapsible anodized aluminum post
- silver powder-coated steel base

ITEM #	DESCRIPTION	PRICE
SNP-STAND	40" Silver Aluminum 11" w x 17" h Sign Holder	\$87.71



OBSERVE PRO

- lightweight, snap together design
- stylish curved header holds 8.5" w x 11" h graphic
- adjustable literature rack for 8.5" w x 11" h printed literature
- molded sign clamp will hold an 1/8" thick mounted graphic
- base dimension: 12" dia.
- option A - no graphic: 12" w x 42" h
- option B - with header: 12" w x 48" h

ITEM #	DESCRIPTION	PRICE
OBS-LP-SYS	42" h Info Center with Header & Lit Pocket	\$80.29



TRAPPA TUBE SIGN STAND

- 11" x 17" silver Trappa poster frame with clear, protective lens
- front loading graphic mechanism makes graphic changes easy
- capability to display in portrait or landscape configuration
- aluminum snap-button tube and plastic base
- assembled dimensions = 12" w x 48.22" h x 12" d

ITEM #	DESCRIPTION	PRICE
TRAPPA-TUBE-STAND-TRP2-11-G	48.22" h Aluminum 11" x 17" Sign Holder	\$137.52



TRAPPA POST INFO CENTER

- snap sign frame(s)
- variety of configurations and sizes
- sturdy aluminum posts and heavy domed steel base plate ensures stability
- includes clear protective lenses
- choice of silver or black snap, large or small landscape, portrait or diagonal
- front loading graphic mechanism makes graphic changes easy

ITEM #	DESCRIPTION	PRICE
TP4	3 Straight Frames - 20" w x 16" h	\$335.97

inform & educate customers or employees!



SIGNSQUADS
DESIGN • PRINT • INSTALL

www.SignSquads.com | 1-201-729-1720